

HSI MODELS

SECONDARY HSI

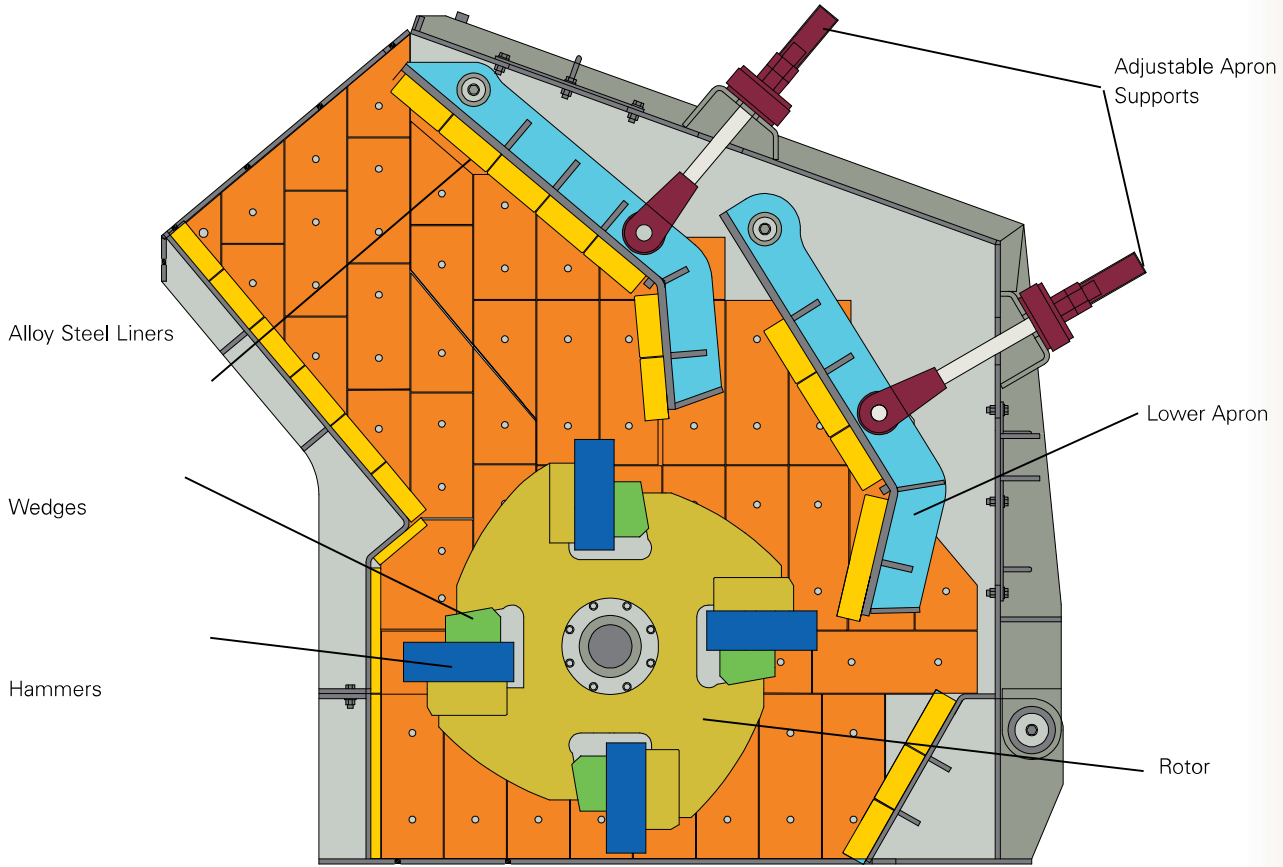


TelSmith HS models (HS2421, HS2430, HS3036, HS4230, HS5252, HS5263) are Andreas style impact crushers designed for secondary crushing. Efficient open style rotors and heavy - gravity hung aprons deliver consistent performance when crushing aggregates or recycled asphalt products (RAP). Udemque inpra moenica mei pra? Nihilii spero cresuam inum sciem dit, coenatum publi idi, cute pritam renerum imorbis se tanum oriam quodiem iam co ubis, peperi percereses, consuli condie ad fur. At publius? Fue finum hil tati trio te con ignost? Ibussimis es! Viri sent, sen in vid inaturnime furoxim isules C. Es vertam ommodis orus faciem cultum nihilin Itas et L. Simovivatus re rei peres cotimil icaudene faciem nontemlque nes! Hilis, oculus publi

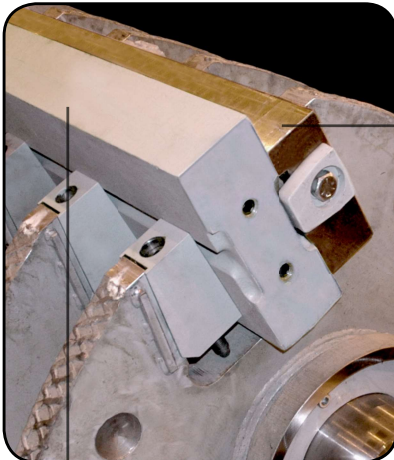
interri mulostium di, opublis facchus, clatide int Catum inam a morus, pulic in vid dienihin vit, num periores endi incla nox maiocus virioni natqua rendem nonerni rideper escrum culium caed niium utus? Ebemus co atuus mo pero, Catquodio, C. Fectum atus. Maricae ca omne abus vit accessen atilici teatqui deliae nones verum ina, meis Cat, Ti. Omnest? que aderrime nonvocut abus efendum ultius vo, Cupiessesula deo et faccis.

Ore tides erei public mantratus trei por hors bon simoltiam atu straedo, utum ius inihi, quam, teatis. Lut graris tebus vicaesilibus larit, se que ta, sil halius hos med nori se atiemor quam intiamdiis. To cae, qua

HSI SECTION VIEW:

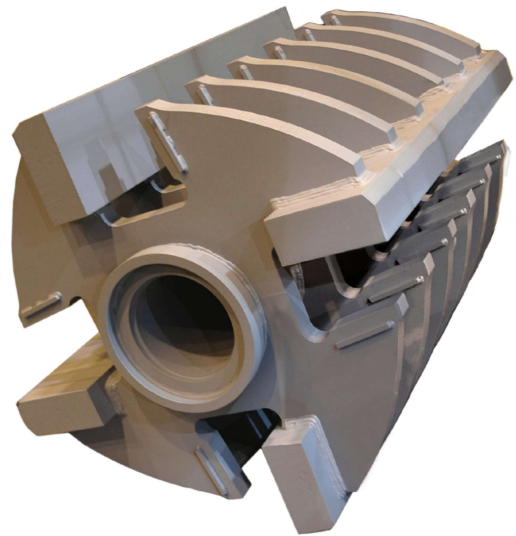


HSI ROTOR DESIGN:



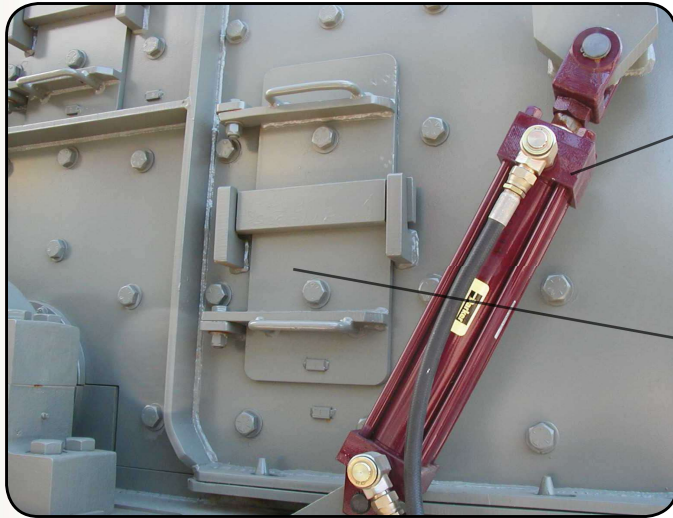
Blow bars are held firmly in place with a locking wedge design. The blow bar is designed for 3 rotations

Blow bars are held firmly in place with a locking wedge design. The blow bar is designed for 3 rotations allowing up to 4 wear surfaces.



A massive solid type sculptured rotor delivers both high inertia for optimum crushing performance and solid backing support for the blow bars. This results in longevity and lower costs, even in rugged primary crushing.

HSI FEATURES & SPECIFICATIONS:



INSPECTION DOORS

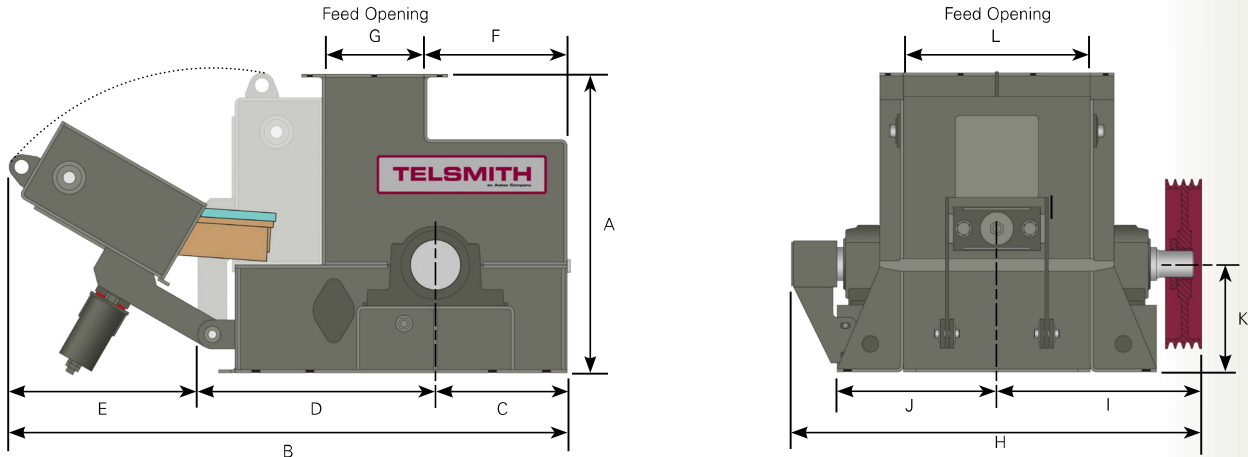
Inspection doors are located on both sides of the PA6060, allowing quick and easy access.

INSPECTION DOORS

Inspection doors are located on both sides of the PA6060, allowing quick and easy access.

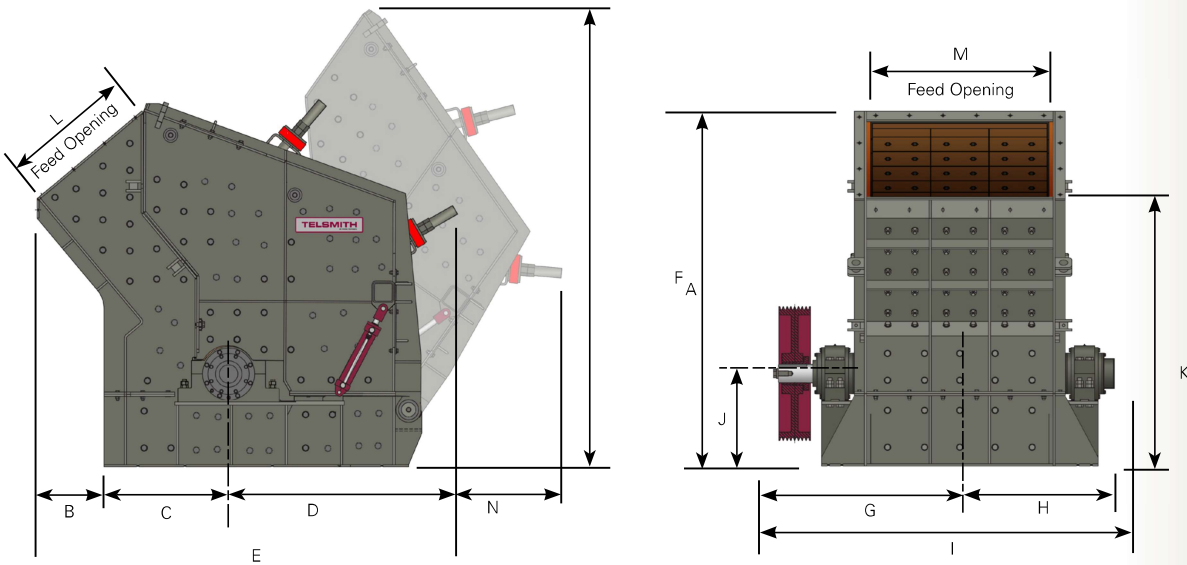
HSI Specifications												
	US	mm	US	mm	US	mm	US	mm	US	mm	US	mm
Model	2421		2430		3036		4230		5252		5263	
Total Weight	3,170 Lbs	1,440 Kg	3,500 Lbs	1,590 Kg	7,300 Lbs	3,310 Kg	19,250 Lbs	8,730 Kg	37,500 Lbs	17,000 Kg	48,000 Lbs	21,775 Kg
Recommended HP	50		75		75-100		75-100		250-300		300-400	
Crusher Sheave Options (RD)	20"	508 mm			21.2"	546 mm	30"	762 mm	40"	1,016 mm	40"	1,016 mm
Recommended Crusher RPM Range	1200		1200		1200		1200		1200		1200	
Rotor Tip Speed Range												
Rated Capacity	35 -50 TPH				75 - 100 TPH		80 - 120 TPH		110 - 230 TPH		190 - 320 TPH	
Feed Opening	11" x 22"	280 x 560 mm	13" x 31"	330 x 787mm	17" x 36"	432 x 915 mm	16" x 31"	406 x 787 mm	24" x 43"	610 x 1,092 mm	24" x 64"	610 x 1,625 mm
Max Feed Size	5"		7"		9"		12"		16"		16"	
Rotor Size			24" x 29"		610 x 737 mm							
Rotor Weight Assembled	1035 Lbs	470 Kg	1051 Lbs	480 Kg			5,045 Lbs	2,290 Kg	10,625 Lbs	4,820 kg	11,630 Lbs	5,275 Kg
Moment of Inertia												
Blow Bars	2		2		2		4		4			
Blow Bar Thickness												
Blow Bar Weight	120 Lbs	55 Kg										
Side Liner Thickness	1/2"	13 mm	1/2:	13 mm	1/2"	13 mm	1 1/4"	32 mm	1 1/4"	32 mm	1 1/4"	32mm
Side Liner Material	Chrome Alloy											
Bearing Type												
Bearing Size												
Shaft diameter @ Rotor												
Shaft diameter @ sheave												
Hydraulic Tank Capacity												
Hydraulic Motor												

HSI SIZE AND MODEL CHARTS:



General Dimensions - Models 2421, 2430

Model		A	B	C	D	E	F	G	H	I	J	K	L
2421	US (in)	37	25.75	24	15.75	45.5	36	24.75	19.25	49.5	13	21.5	16
	mm	940	655	613	403	1154	914	627	489	1256	330	546	406
2430	US (in)	37	26.75	24.5	16.25	58.75	36	32.75	23.75	56.5	13	30.5	16.25
	mm	940	681	622	413	1492	914	832	603	1434	330	775	413



General Dimensions - Models 3036, 3048, 4230, 5252, 5263

Model		A	B	C	D	E	F	G	H	I	J	K	L	M	N
3036	US (in)	71.25	12.5	18.5	28.25	81.25	61.75	34.25	26.75	68.5	17	42.5	17	36.5	45
	mm	1811	321	473	718	2065	1567	870	676	1740	432	1078	435	927	1140
3048	US (in)	77	3.5	20.75	29.5	76.5	72.75	39.75	37	76.75	20.25	41.5	17.75	47.75	39
	mm	1956	89	529	751	1943	1848	1011	940	1950	514	1054	452	1213	992
4230	US (in)	108	13.5	32	45.5	77.25	83.5	38	28.5	76	23.25	58	16	31	44
	mm	2743	343	810	1156	1965	2121	965	721	1830	591	1473	406	787	1118
5252	US (in)	136	20	37	55.25	124.25	107.75	55.5	41.25	101.5	27.75	79.75	30.5	53	42
	mm	3458	508	940	1403	3157	2735	1408	1045	2578	702	2026	778	1346	1063
5263	US (in)	136	20	37	55.25	124.25	107.75	61	47	112.5	27.5	49.75	30.5	64	42
	mm	3458	508	940	1403	3157	2735	1548	1194	2854	702	2026	778	1626	1063